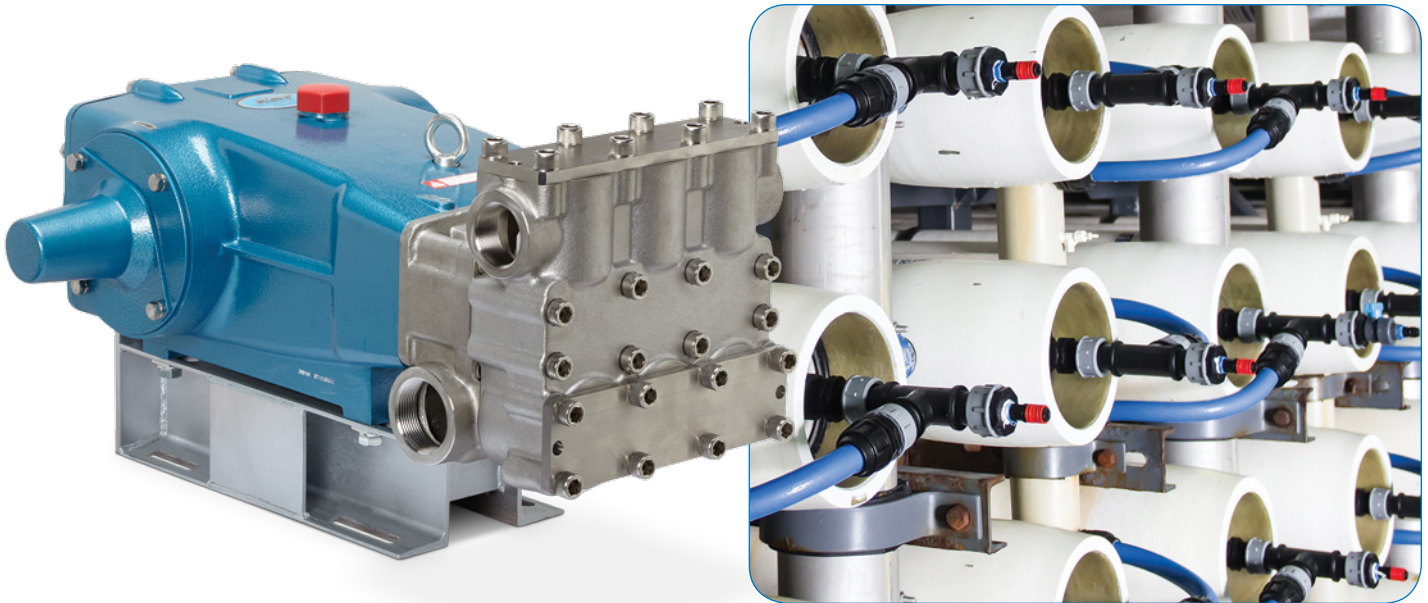


MODELS 67102 & 67102C PLUNGER PUMPS



100 GPM – 1,000 PSI
80 GPM – 1,200 PSI (Alternate)

Engineered for Maximum Dependability

Cat Pumps models 67102 and 67102C performance rating of 100 gpm/378 lpm at 1,000 psi/69 bar is designed for high-flow applications demanding superior dependability and long-life. The 67102 is perfectly suited for water desalination (SWRO), central cleaning and washdown systems and other high-flow applications.

Cat Pumps engineers focused on every critical design element to produce a pump with incredible service life. The heavy-duty cast duplex stainless steel manifolds stand up to the most demanding, continuous duty applications. The drive-end uses matched connecting rods and oversized bearings to provide thousands of hours of trouble-free service. Concentric, high-density polished solid ceramic plungers provide a true wear surface, resulting in industry-leading seal life. The 67102 is what you expect from Cat Pumps — a high quality, dependable product backed by the industry's best customer service and support.

Features:

- Cast duplex (SCS11) inlet and discharge manifolds provide excellent corrosion resistance
- V-Packings and low pressure seals are completely lubricated and cooled, greatly increasing service life
- Special flushed inlet manifold with 67102C permits external flush for added cooling with high temperature liquids and lubrication with low lubricity liquids.
- Low unswept volume maximizes volumetric efficiency, reducing energy costs and providing consistent flow

Typical Applications:

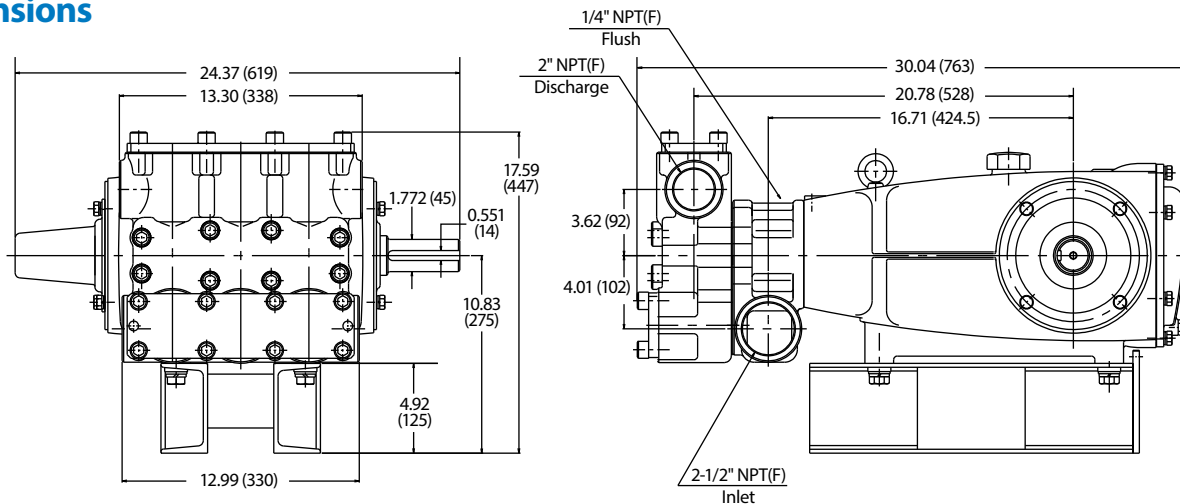
- Salt and Brackish Water Desalination (SWRO)
- Wastewater Treatment and Reclamation
- Central Cleaning Systems in Food Processing
- Heavy-Duty Mobile Equipment Washdown
- Multi-Gun Washdown Systems
- High-Flow and Pressure Chemical Processing

Specifications

	US Measure	Metric Measure
Flow	100 gpm	378.5 lpm
Flow (Alternate)	80 gpm	302.8 lpm
Pressure	1000 psi	69 bar
Pressure (Alternate)	1200 psi	83 bar
Pump RPM*	680	680
Inlet Pressure Range	Flooded to 30 psi	Flooded to 2 bar
Max. Liquid Temperature	140° F	60° C
Crankcase Capacity	10 qts	9.46 l
Inlet Ports (2)	2 1/2" NPT(F)	2 1/2" NPT(F)
Flushing Ports (2) (67102C)	1/4" NPT(F)	1/4" NPT(F)
Discharge Ports (2)	2" NPT(F)	2" NPT(F)
Shaft Diameter	1.772"	45 mm
Weight	363.75 lbs	165 kg
Dimensions	30.04 x 24.37 x 12.67"	763 x 619 x 322 mm

*Pump minimum is 100 RPM.

Dimensions



Popular Accessories



Pressure Regulator

PN 7410
10 - 100 GPM
100 - 1,500 psi



Relief Valve

PN 890702
25 - 210 gpm
500 - 2,000 psi



Pressure Gauge

PN 6073
0 - 3,000 psi



Pulsation Dampener

PN 701557
214 cu. in.
1,275 psi



Oil

PN 6105
Twin Pack - 2.5 gallon
Specially formulated for extended protection.

Contact Cat Pumps for more information at info@catpumps.com or 763-780-5440



CAT PUMPS

1681 - 94TH LANE N.E. MINNEAPOLIS, MN 55449-4324
PHONE (763) 780-5440 — FAX (763) 780-2958
e-mail: techsupport@catpumps.com
www.catpumps.com