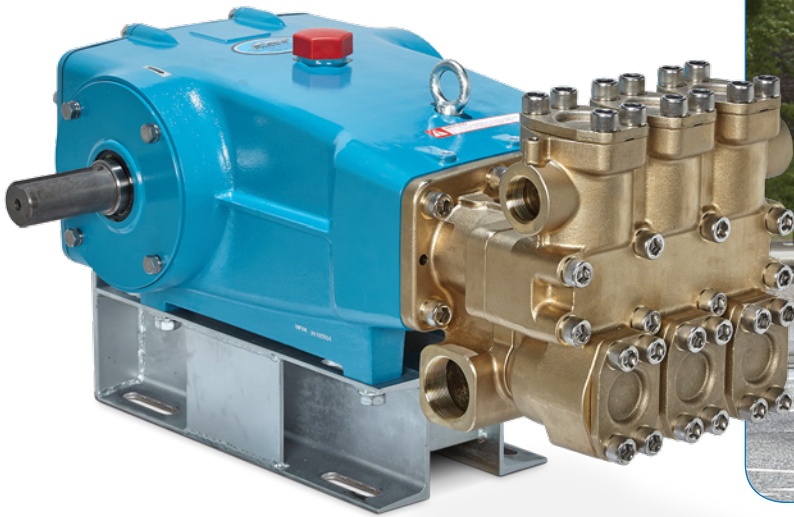


MODEL 67070 PLUNGER PUMP



65 GPM – 2,000 PSI Sewer Jetting Application
50 GPM – 2,000 PSI Continuous Duty Industrial Application

Designed for Sewer Jetting and other Mobile Applications

The model 67070 is ideal for the sewer jetting and hydroexcavating market applications requiring high-flow performance (65 gpm/246 lpm) at higher pressures (2,000 psi/138 bar) at intermittent duty operation. For continuous duty operation, the model 67070 is rated at 50 gpm/189 lpm at 2,000 psi/138 bar.

The drive-end of the 67070 pump is built from the field-proven Cat Pumps 60 frame mechanical drive — the best mechanical drive available in triplex positive displacement pumps. Oversized, premium crankshaft bearings offer high loading capacity, greatly prolonging bearing life. Customers worldwide trust Cat Pumps to keep their equipment running.

The model 67070 is what you expect from Cat Pumps: uncompromising quality for optimum performance. When it needs to run, make it Cat Pumps.

Features:

- Single concentric bore plunger designed with increased wall thickness offers superior heat dissipation, increasing seal life while maintaining optimum performance
- 100% wet seal design adds to service life by allowing pumped fluid to cool and lubricate the packings
- Crankcase crosshead area is concentric with 360° plunger rod support and features drilled-through oil port to lubricate front side of crosshead area

Typical Applications:

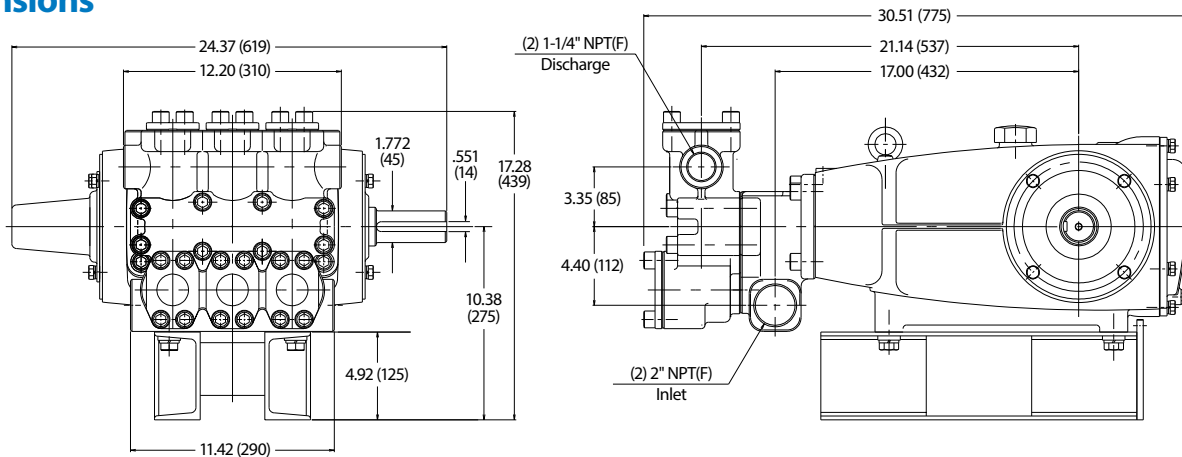
- Hydroexcavating
- Sewer Jetting
- Other high-flow, high-pressure applications

Specifications

	US Measure	Metric Measure
Flow	65 gpm	246 lpm
Flow (Alternate)	50 gpm	189 lpm
Pressure	2000 psi	138 bar
Pump RPM*	850	850
Inlet Pressure Range	Flooded to 60 psi	Flooded to 4.1 bar
Max. Liquid Temperature	140° F	60° C
Crankcase Capacity	10 qts	9.46 l
Inlet Ports (2)	2" NPT(F)	2" NPT(F)
Discharge Ports (2)	1-1/4" NPT(F)	1-1/4" NPT(F)
Weight	339 lbs	154 kg
Dimensions	30.51 x 24.37 x 12.36"	775 x 619 x 314 mm

*Pump minimum is 100 RPM.

Dimensions



Popular Accessories



Pressure Regulator

PN 7376
10 - 75 GPM
500 - 2,000 psi



Relief Valve

PN 890702
25 - 210 gpm
500 - 2,000 psi



Pressure Gauge

PN 6089
0 - 6,000 psi



Pulsation Dampener

PN 701550
122 cu. in.
3,365 psi



Oil

PN 6105
Twin Pack - 2.5 gallon
Specially formulated for
extended protection.

Contact Cat Pumps for more information at info@catpumps.com or 763-780-5440



CAT PUMPS

1681 - 94TH LANE N.E. MINNEAPOLIS, MN 55449-4324
PHONE (763) 780-5440 — FAX (763) 780-2958
e-mail: techsupport@catpumps.com
www.catpumps.com